

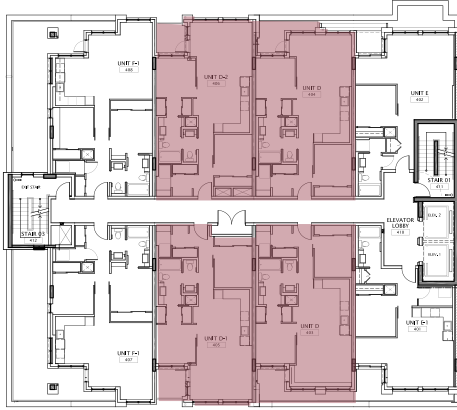
EXECUTIVE

 2 BED

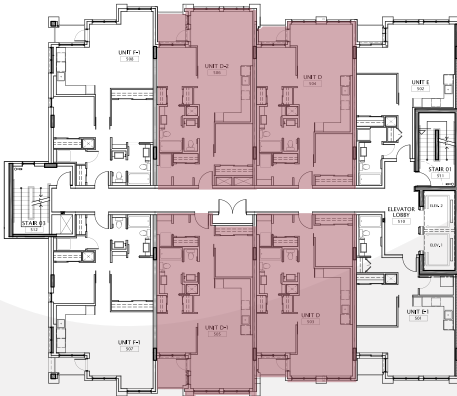
 1.5 BATH

 769 SQ.FT.

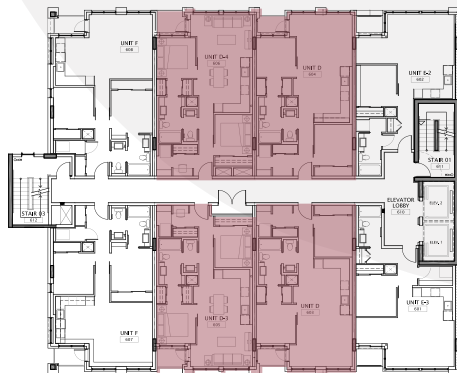
THE **george**



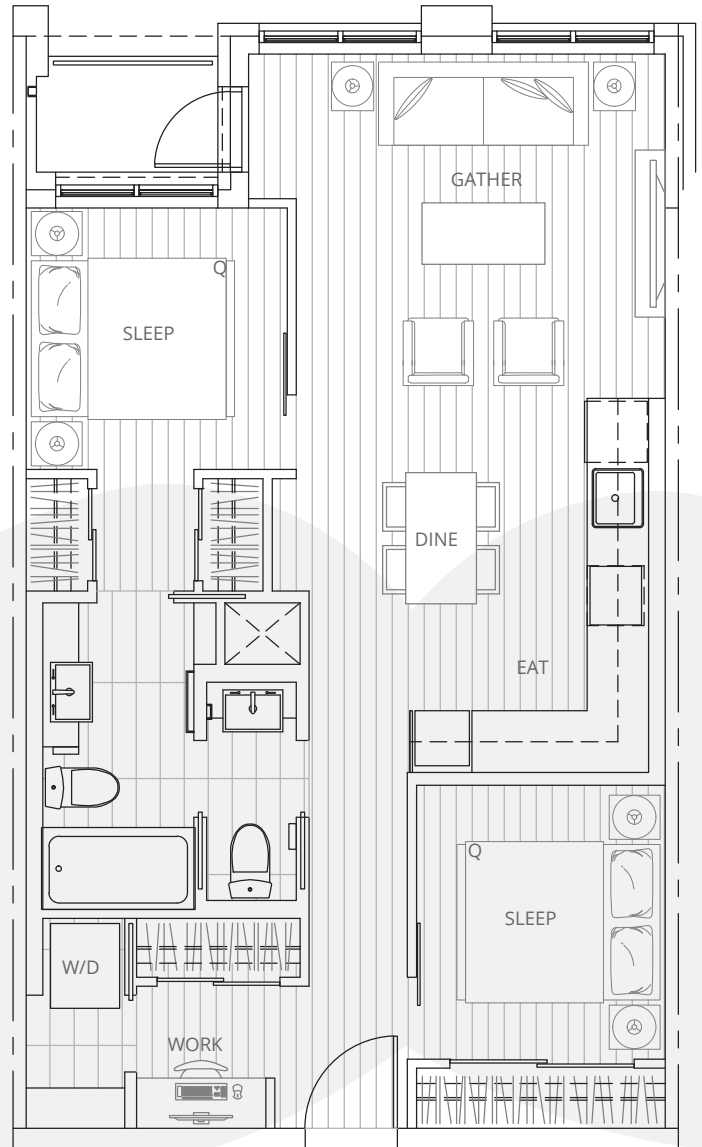
FLOOR 4



FLOOR 5



FLOORS 6 & 7



*Floor plans may differ slightly based on floor and location.

FIT AND FINISH



THE BUILDING

- Built by 3 year in a row Customer Choice Award Winner for highest customer satisfaction Truman Homes
- Certified Green built building located on the infamous Red Mile with over 70 restaurants, shops and coffee houses within a 10 minute walk
- Maintenance free exteriors with large private quiet balconies
- Oversize high performance energy saving windows and oversize doors/patio sliders
- Touch screen phone and security monitoring system at lobby with cell phone connection and video streaming to in-suite Smart TVs
- Painted, secured, and heated underground parkade with quick open door and bicycle storage
- Built-in smoke/heat detectors and in-suite water sprinkler system
- Oversized elevators with secure floor fob and television

THE SUITES

- Custom designed solid core entry door with security view-hole and backlit address plate
- Hand-scraped engineered flooring
- In-suite technology featuring Smart TV with built in Netflix and integrated wiring
- Convenient and ultra-quiet in-suite Energy Star front-load stacking washer and dryer
- Brilliant contemporary, energy-efficient light fixtures, with ample LED pot lights throughout
- Smooth panel barn doors with levered anti-scuff and scratch Emtek® door hardware
- Soft-close frosted glass bedroom doors with custom The George handle
- Sophisticated 10mm designer window treatment package, with gorgeous views of Calgary from every angle
- Modern sleek line profile painted baseboards, door frames and casings accented by painted ceilings
- Integrated heating and air conditioning with Nest thermostat
- Move-in ready suites with high end custom furniture, kitchenware, and linens including hypo-allergenic duvets

THE KITCHENS

- Floor to ceiling super matte custom cabinetry featuring premium finishes, accented by soft close door and drawers with custom stainless steel hardware
- Seamless design with fully integrated appliances and under counter LED lighting
- Caesar stone Staturario countertops with full height caesar stone kitchen backsplashes
- Undermount single sink with industrial high arc single hands free lever pull out faucet
- Versatile easy access cutlery drawer
- Fully stocked kitchen including Oneida flatware and china, and Le Creuset pots and pans

THE BATHROOMS

- Caesar stone Staturario countertops with fully tiled floor to ceiling bricklay tile
- Kohler Wellbrook® modern square edge tubs with sloping lumbar support accented by contemporary tiles, creating a luxe spa atmosphere
- Innovative TruSpace™ integrated storage cabinetry
- Kohler plumbing fixtures with Kohler porcelain undermount sink
- Comfort height Kohler Cimarron® toilets
- Environmentally conscious WaterSense® fixtures, shower heads, and toilets
- Custom bathroom hardware and accessories
- Safety and pressure-balancing mixing valves for tub and showers for well-being